

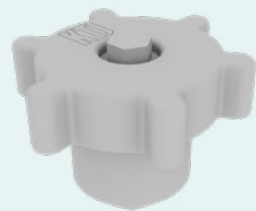
# ACCESSORIES



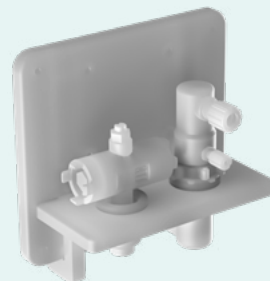
Tamper-Proof Caps with Lead Flags



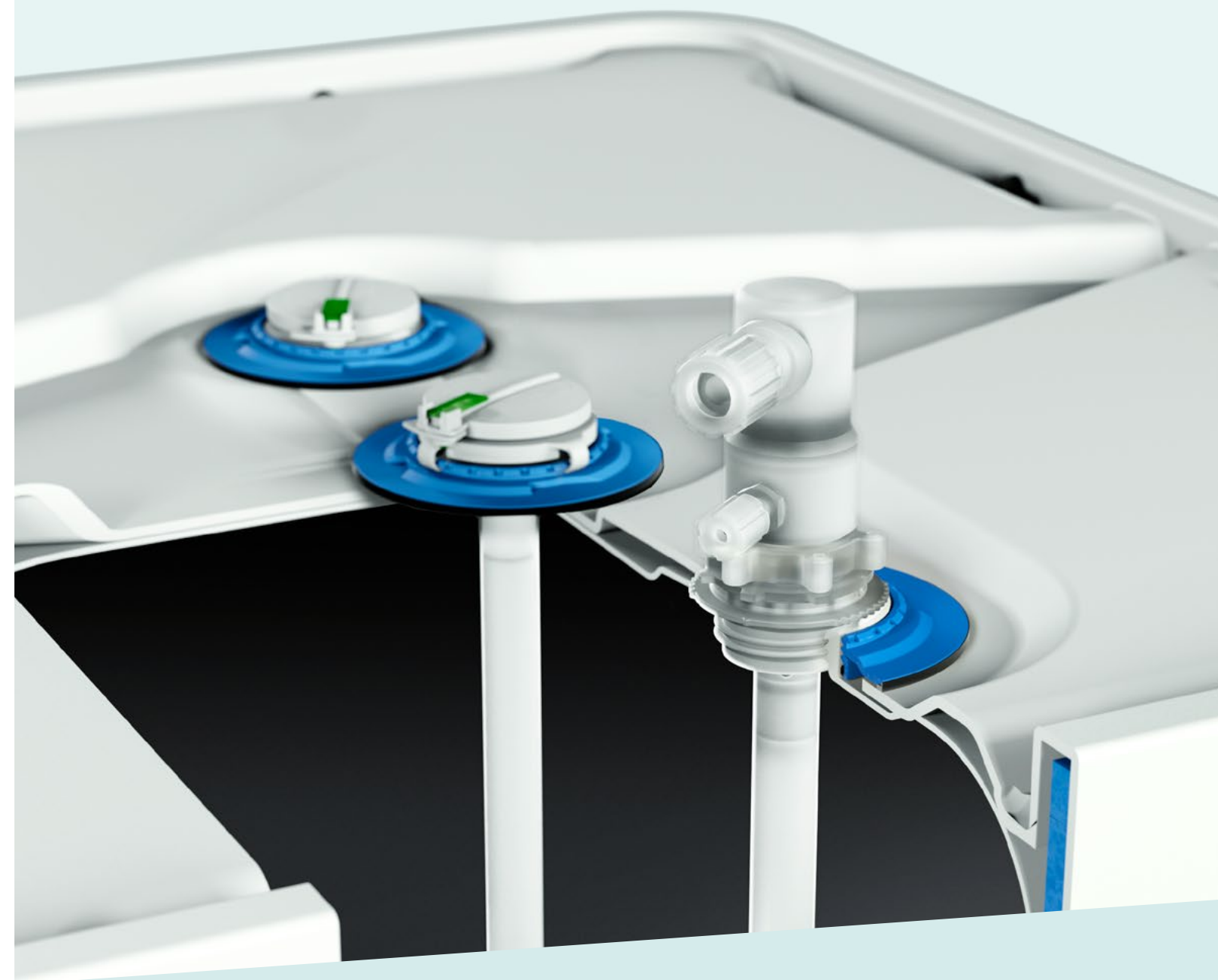
Universal Wrench



Compact Wrench



Docking Station



# RIKUTEC QUICK CONNECT SYSTEM

SIMPLE AND SAFE DISPENSE SOLUTIONS FOR  
HIGH-PURITY APPLICATIONS AND NEEDS

## RIKUTEC GERMANY

Graf-Zeppelin-Straße 1-5  
57610 Altenkirchen | Germany

T +49 2681 9546 0 | F +49 2681 9546 33  
info@rikutec.de | www.rikutec.de

## RIKUTEC AMERICA

2510-B W. Whitner St.  
Anderson, SC 29624 | USA

T +1 508 234 7300  
info@rikutec.com | www.rikutec.com

## RIKUTEC ASIA

Tower B-415, GwaCheon SangSang Jai,  
456 Galhyeon-dong, Gwacheon-si,  
13840 Gyeonggi-do | Republic of Korea

T +82 2 797 0701  
info@rikutec.asia | www.rikutec.asia

05/2025

# RIKUTEC QUICK CONNECT SYSTEM

With over 25 years of expertise in the design and production of dispensing technologies, the RIKUTEC Quick Connect System has become one of the leading solutions worldwide for the safe handling of liquid chemicals. More than just a connector, Quick Connect is a precision tool made from ultra-pure, metal-free polymers—ideal for acids, bases, and solvents, including aggressive and flammable substances.

The system ensures safe and contamination-free extraction from drums, IBCs, and canisters, while simultaneously allowing controlled venting. Each unit features a dedicated dip tube and a dual-port dispensing head for both media and air, enabling a closed-loop process that protects users and the environment.

With its modular design and intelligent keying options, the RIKUTEC Quick Connect System offers clean, safe, and flexible chemical handling across a wide range of industries.

# FAST. RELIABLE. AVAILABLE WORLDWIDE.

**Quick Availability:** Standard versions of dip tubes, closures, seals, and tamper-evident components are ready for pickup or shipment **within 48 hours** from our production site in Germany.

All key components are manufactured in Germany and finalized at regional hubs in **Anderson (USA) and Seoul & Singapore (Asia)**. From these strategic locations, we ensure rapid availability and short delivery times to our customers worldwide.

Our international logistics network guarantees efficient supply to major markets, among others:

**USA:** Anderson (with local final assembly and warehousing), servicing Austin (TX), Phoenix (AZ), Dallas, Seattle, San Jose (CA), Santa Clara (CA)

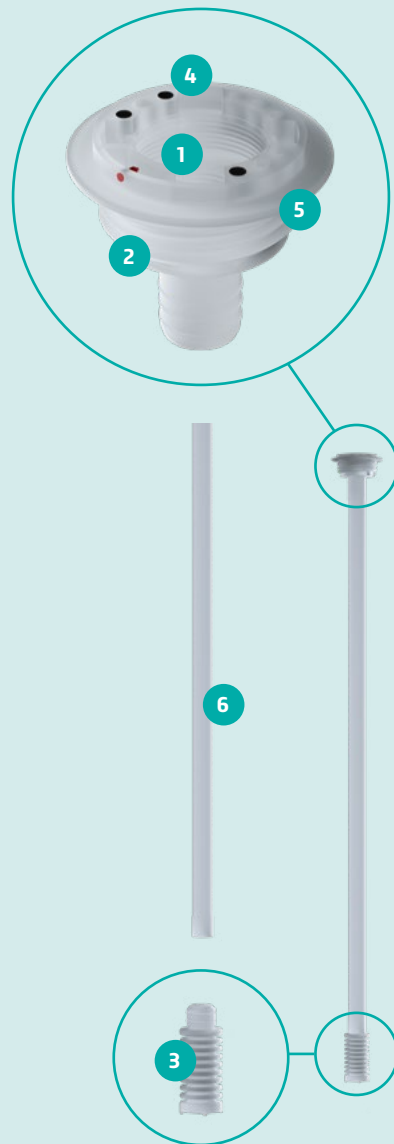
**Asia:** Seoul & Singapore (regional hubs), serving Tokyo (JP), Taipei (TW), Dalian (CN)

**Europe:** Catania (IT), Dublin (IR), Dresden (DE), Villach (AT)



# RIKUTEC DIP TUBE

RIKUTEC Dip Tubes are the suitable choice for your dispensing and filling needs. Each dip tube is molded from high-purity polymers, which makes it capable for handling liquids in the chemical, pharmaceutical and semiconductor industries. With the RIKUTEC dip tube, chemical dispensing or filling becomes a streamlined and efficient process, improving workplace safety and productivity.



- 1 **Different Closures**  
to Prevent Leaks (Vented Closures Available)
- 2 **Different Bung Sizes**  
and Threading Available
- 3 **Optional Bellow**  
for RCRA Empty on all Containers
- 4 **Error-Proof Coding System**
- 5 **POE and PE Gaskets**  
for Sealing and Compatibility
- 6 **Lengths**  
Available up to 1200+ mm

## DIP TUBE HIGHLIGHTS



UN and DOT Tested  
and Approved



Suitable for a Wide  
Array of Packaging



Conductive Version  
Available



**IBC UC 2.0**  
with RIKUTEC  
Dip Tube

## ORDER SPECIFICATION RIKUTEC DIP TUBE

### STANDARD VERSION

Threading	Specification
S56 x 4	DT- <b>56</b> <b>XX</b> - <b>XXX</b> -XXXX - <b>X</b> <b>D</b>
S62 x 5	DT- <b>62</b> <b>XX</b> - <b>XXX</b> -XXXX - <b>X</b> <b>D</b>
S62 x 5	DT- <b>62R</b> <b>XX</b> - <b>XXX</b> -XXXX - <b>X</b> <b>D</b>
S70 x 6	DT- <b>70</b> <b>XX</b> - <b>XXX</b> -XXXX - <b>X</b> <b>D</b>

### WITH BELLOW

Threading	Specification
S56 x 4	DT- <b>56</b> <b>XX</b> - <b>XXX</b> -XXXX - <b>X</b> <b>F</b>
S62 x 5	DT- <b>62</b> <b>XX</b> - <b>XXX</b> -XXXX - <b>X</b> <b>F</b>
S62 x 5	DT- <b>62R</b> <b>XX</b> - <b>XXX</b> -XXXX - <b>X</b> <b>F</b>
S70 x 6	DT- <b>70</b> <b>XX</b> - <b>XXX</b> -XXXX - <b>X</b> <b>F</b>

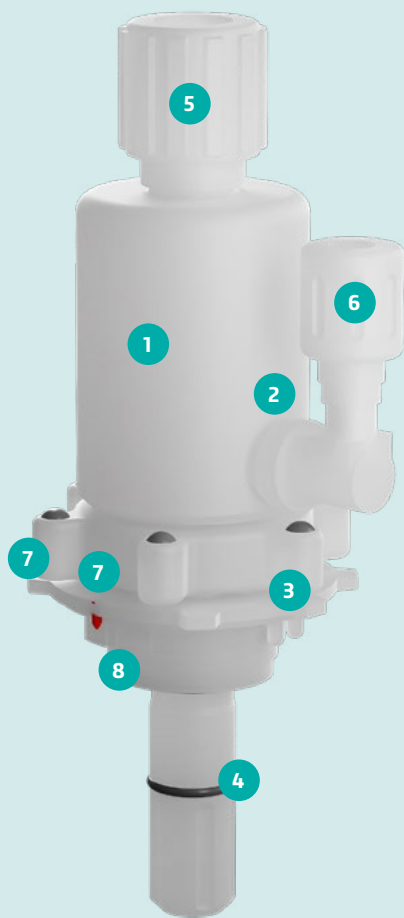
### DT-XXXX-XXX-XXXX-XX

<b>XX</b>	<b>Bung Size</b> (S56x4, S62x5, S70x6)
<b>XX</b>	<b>Material</b> (PP, PE)
<b>XXX</b>	<b>Chemical Code</b> Code according to the "Chemical coding" table, e.g. <b>000</b> for unencoded
<b>XXXX</b>	<b>Length</b> Recirculation <b>0000</b>
<b>X</b>	<b>Closure</b> ( <b>T</b> =42x2, <b>W</b> =42x2 vented, <b>S</b> =3/4")
<b>X</b>	<b>Options</b> ( <b>D</b> =Standard Dip Tube, <b>F</b> =Bottom Bellow, <b>O</b> =Recirculation)



# RIKUTEC DISPENSE AND RECIRCULATION HEAD

RIKUTEC Dispense and Recirculation Heads are a vital component for accurate and precise dispensing and filling of high-purity chemicals. They provide a secure and leak-proof connection, offer a variety of flow rates, and can be customized to suit specific chemical dispensing and filling needs. With the RIKUTEC dispense or recirculation head, chemical dispensing or filling becomes a streamlined and efficient process, improving workplace safety and productivity.



- 1 **Built-in Check Valve**  
to Control Backflow into Container
- 2 **Made from High-Purity Resin**  
in Cleanroom Environment
- 3 **Key-Coding System**  
for Cross-Contamination Control
- 4 **Gaskets for Chemical Compatibility**  
(Kalrez, Viton, EPDM)
- 5 **Fluid Connector**  
in different sizes
- 6 **Simultaneous Venting**  
in different sizes
- 7 **PEEK Threading**  
for Durability
- 8 **Molded for any Bung Size and Thread**

## BENEFITS



Integrated  
Safety System



Chemical Purity with  
Low Trace Material



Error-Proof  
Coding System Enabled



Easy to Install  
and Operate



Sizable for Most  
Containers

## ORDER SPECIFICATION RIKUTEC DISPENSE AND RECIRCULATION HEAD

DH-XX-XX-XXX-XXX/X-XXX/X

DH	DH = Dispense Head
X	Function D = Dispense R = Recirculation
X	Gasket K = DuPont Kalrez®, Compound 6375 Q = FKM F = FKM E = EPDM
XX	Material (PE, CD, PVDF)
XXX	Chemical Code: (according to the RIKUTEC Quick Connect System 2 chemical coding table)
X	H = Fluid connection horizontal V = Fluid connection vertical
XX/X	Fluid connection: F1/4 = 1/4" Flare F3/8 = 3/8" Flare F1/2 = 1/2" Flare F3/4 = 3/4" Flare F1/1 = 1" Flare
X	H = Horizontal ventilation connection V = Ventilation connection vertical
XX/X	Ventilation connection: F1/4 = 1/4" Flare F3/8 = 3/8" Flare F1/2 = 1/2" Flare