

# TWIN DRUM

## 200L

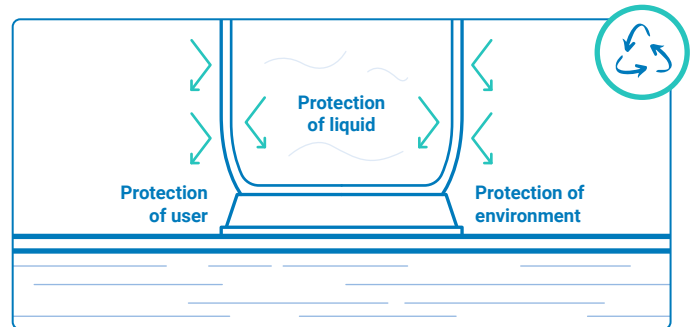
The Twin Drum is a high-quality, reusable, double-walled drum with UN and DOT approval. That makes it capable for handling of high-purity liquids in chemical, pharmaceutical and semiconductor industries.

### Benefits

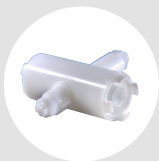
- Very low content of trace metals and particles in the inner liner – semiconductor grade < 100 ppt
- Traceability identification label
- All-round protection against environmental influences
- Double L-Ring, for high stability and easier handling
- High vapor pressure
- Minimal residual liquid
- UN and DOT approved X Packaging Group I, 320kpa tested
- Doppie walled design – secondary containment
- Specially designed for Nitric Acid
- Recyclable



### Maximum safety with RIKUTEC-Solutions



### Accessories



#### 1 Universal Key



#### 2 Dip tube S62x5

- available with compensator for better chemical dispensing
- key-coded system



#### 3 Dispensing head

- Availability of simultaneously filling and extraction

# TECHNICAL DATA SHEET

## TWIN DRUM 200L

Specifications	Twin Drum
Material Inner layer of inside drum	HDPE without any stabilizers or additives
Material Outer layer of inside drum	HDPE
Material outer drum	HDPE
Transport quantity	192 (Europe) or 176 (USA) per truck (8 per Pallet) 208 per Container 40''
Bungs	2x S62 x 5mm / 2x2'' modified buttress (1 vented and 1 non-vented)
Standard color	Blue
Nominal capacity	196 liter / approx. 53 gal.
Height	585 x 963mm / approx. 23 in. x 37,9 in.
Pallet stacking (empty)	Max. 3 pallets high
Pallet stacking (full)	2 pallets high
Weight	+/- 16 kg / approx. 35.3 lb
Prepared for extractor tubes	Quick Connect, Entegris
<b>Approvals</b>	
UN certification	6HH1/X1.9/320/.../D/BAM/14926 - RIKUTEC
DOT certification	6HH1/X1.9/320/**USA/AA9938
<b>Standard liquid approvals</b>	
	<b>Density kg/l</b>
Water	1.9
Wetting solution normal Butylacetat	1.2
Acetic acid	1.2
Nitric acid 69%	1.4
White Spirit	1.2

### Rikutec Germany

Richter Kunststofftechnik GmbH & Co. KG  
Graf-Zeppelin-Straße 1-5  
57610 Altenkirchen | Germany  
T +49 2681 9546 0 | F +49 2681 9546 33  
info@rikutec.de | www.rikutec.de

### Rikutec America

371 Douglas Road  
Whitinsville MA, 01588 | USA  
T +1 508 234 7300 | F +1 508 234 7337  
info@rikutec.com | www.rikutec.com

### Rikutec Asia

RM 1003, ACE TWIN - Tower 1 CHA  
285, Digital-Ro - Guro-gu  
Seoul, 08381 | Korea  
T +82 2761 2760 | F +82 2761 2759  
rikutecasia@unitel.co.kr